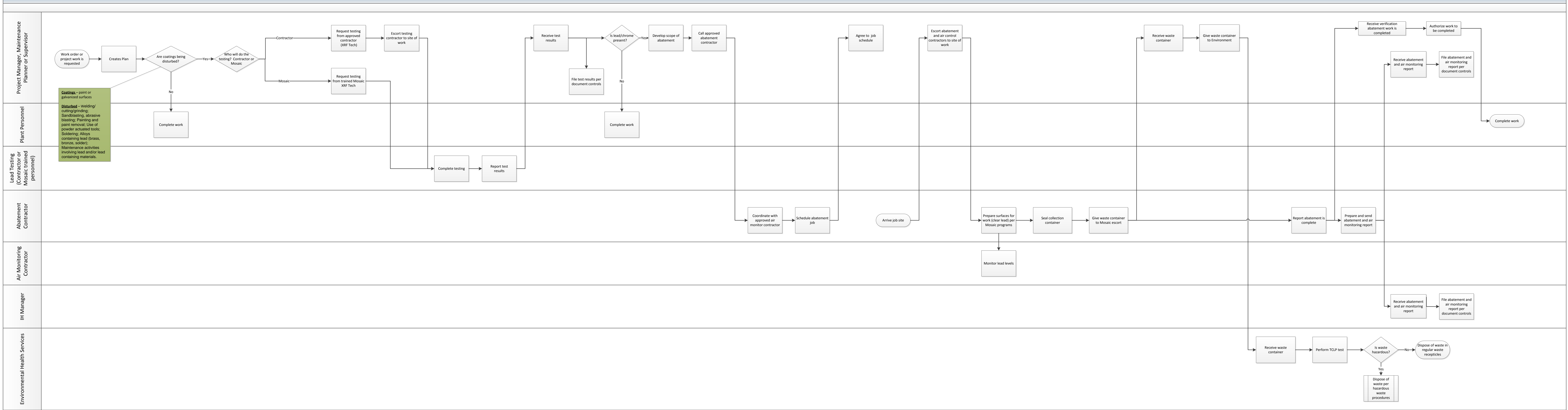
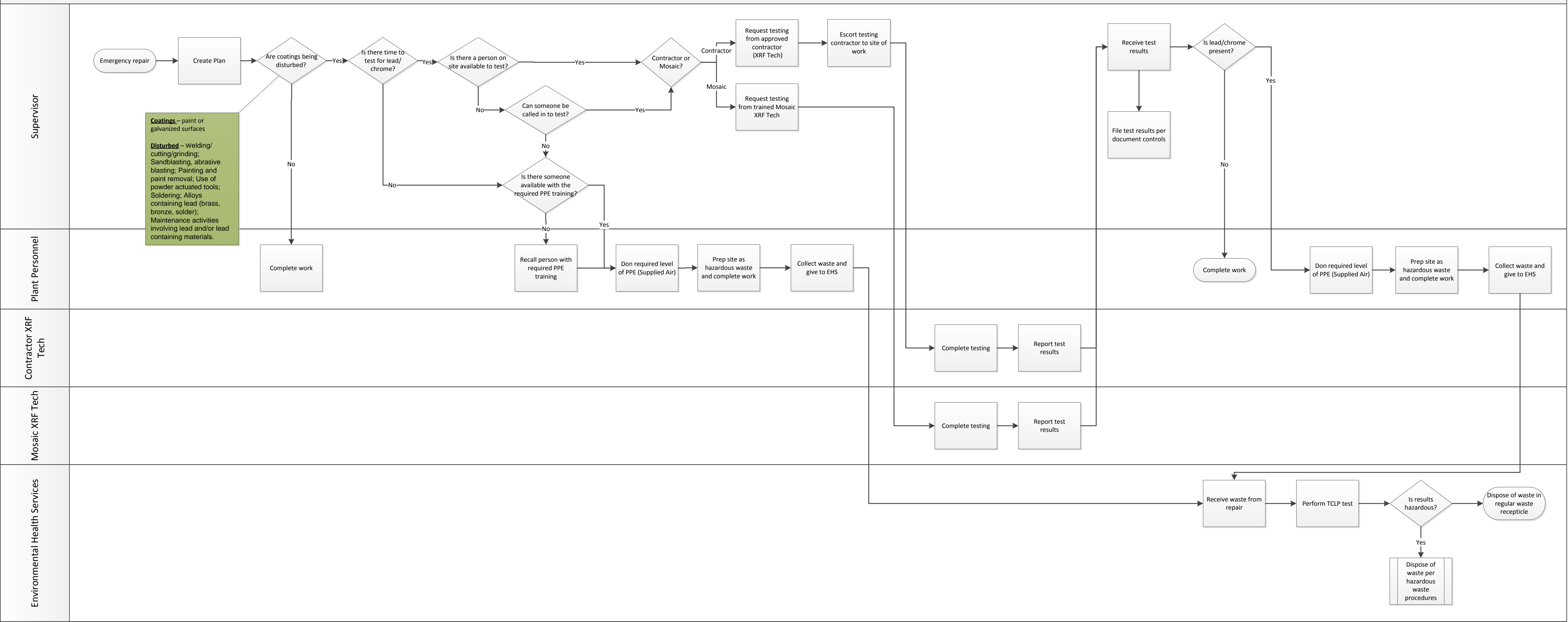


Coating (Chrome/Lead) Abatement Process - Non Emergency



Coating (Chrome/Lead) Abatement Process - Emergency



Coatings – paint or galvanized surfaces
Disturbed – Welding/cutting/grinding; Sandblasting, abrasive blasting; Painting and paint removal; Use of powder actuated tools; Soldering; Alloys containing lead (brass, bronze, solder); Maintenance activities involving lead and/or lead containing materials.

Receive waste from repair
 Perform TCLP test
 Is results hazardous?
 Yes
 Dispose of waste per hazardous waste procedures
 No
 Dispose of waste in regular waste receptacle